

Figure 1.1 Anatomical position and regional terms

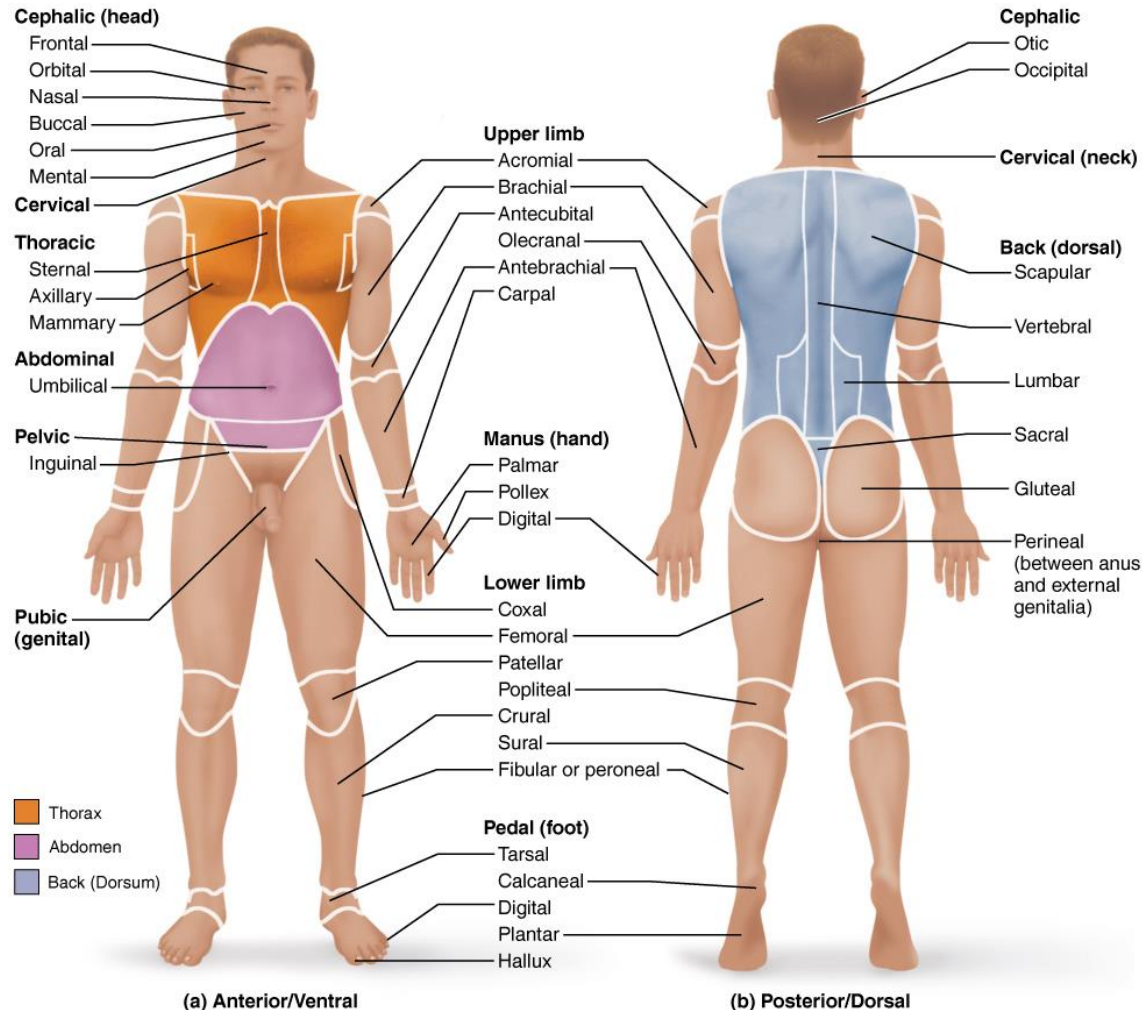


Figure 1.1a Anatomical position and regional terms

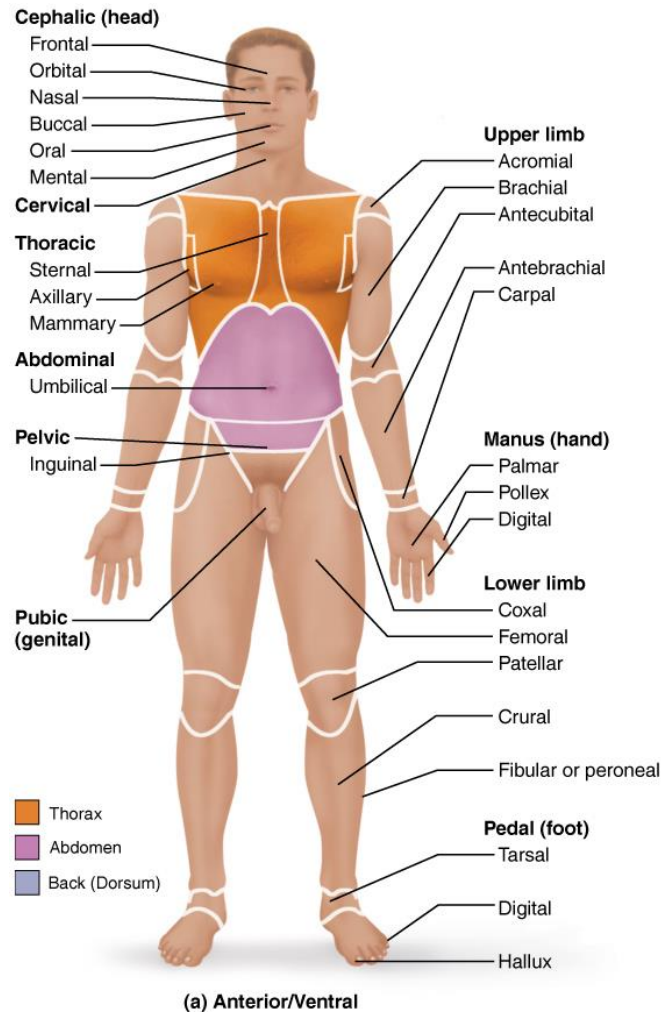


Figure 1.1b Anatomical position and regional terms

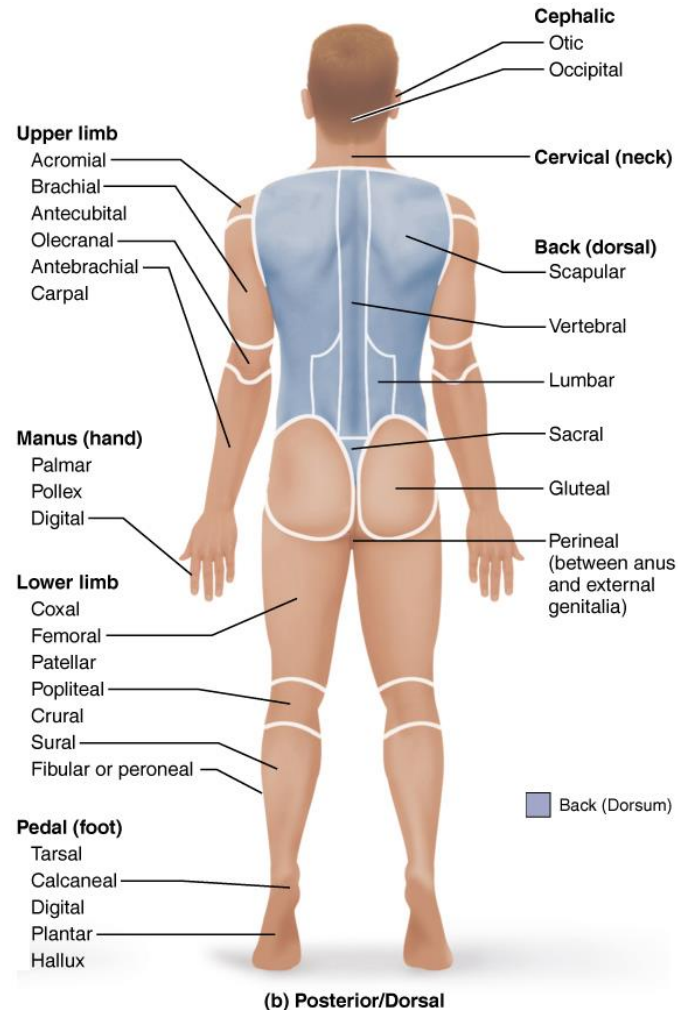


Table 1.1 Regions of the Human Body (Figure 1.1) (1 of 2)

Table 1.1 Regions of the Human Body (Figure 1.1)			
Region	Description	Region	Description
Abdominal	Located below the ribs and above the hips	Nasal	Nose
Acromial	Point of the shoulder	Occipital	Back of the head
Antebrachial	Forearm	Olecranal	Back of the elbow
Antecubital	Anterior surface of the elbow	Oral	Mouth
Axillary	Armpit	Orbital	Bony eye socket
Brachial	Arm (upper portion of the upper limb)	Otic	Ear
Buccal	Cheek	Palmar	Palm of the hand
Calcaneal	Heel of the foot	Patellar	Kneecap
Carpal	Wrist	Pedal	Foot
Cephalic	Head	Pelvic	Pelvis
Cervical	Neck	Perineal	Between the anus and the external genitalia
Coxal	Hip	Plantar	Sole of the foot

Table 1.1 Regions of the Human Body (Figure 1.1) (2 of 2)

Crural	Leg	Pollex	Thumb
Digital	Fingers or toes	Popliteal	Back of the knee
Femoral	Thigh	Pubic	Genital
Fibular (peroneal)	Side of the leg	Sacral	Posterior region between the hip bones
Frontal	Forehead	Scapular	Shoulder blade
Gluteal	Buttocks	Sternal	Breastbone
Hallux	Great toe	Sural	Calf
Inguinal	Groin	Tarsal	Ankle
Lumbar	Lower back	Thoracic	Chest
Mammary	Breast	Umbilical	Naval
Manus	Hand	Vertebral	Spine
Mental	Chin		

Figure 1.2 Directional terms

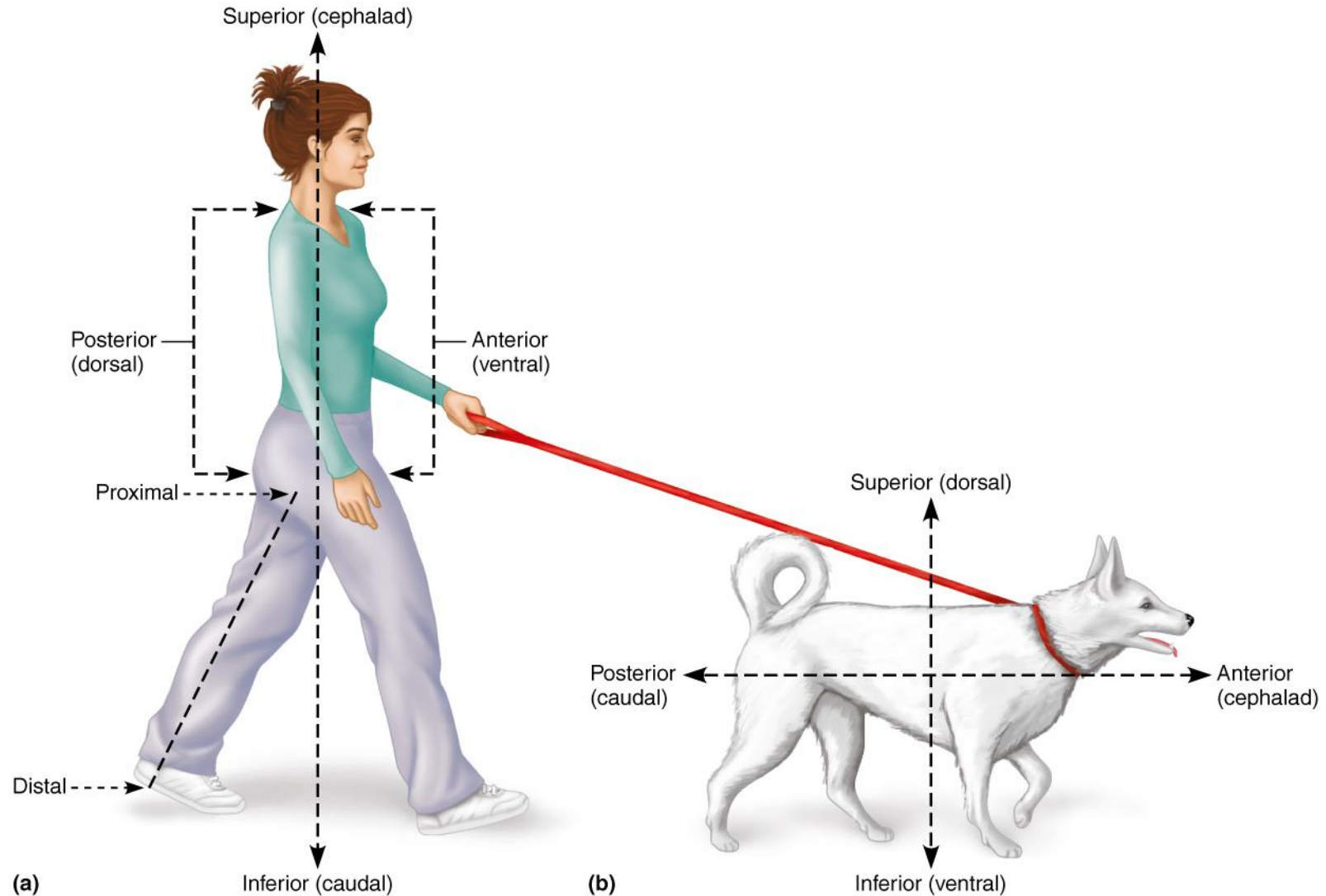


Figure 1.2a Directional terms

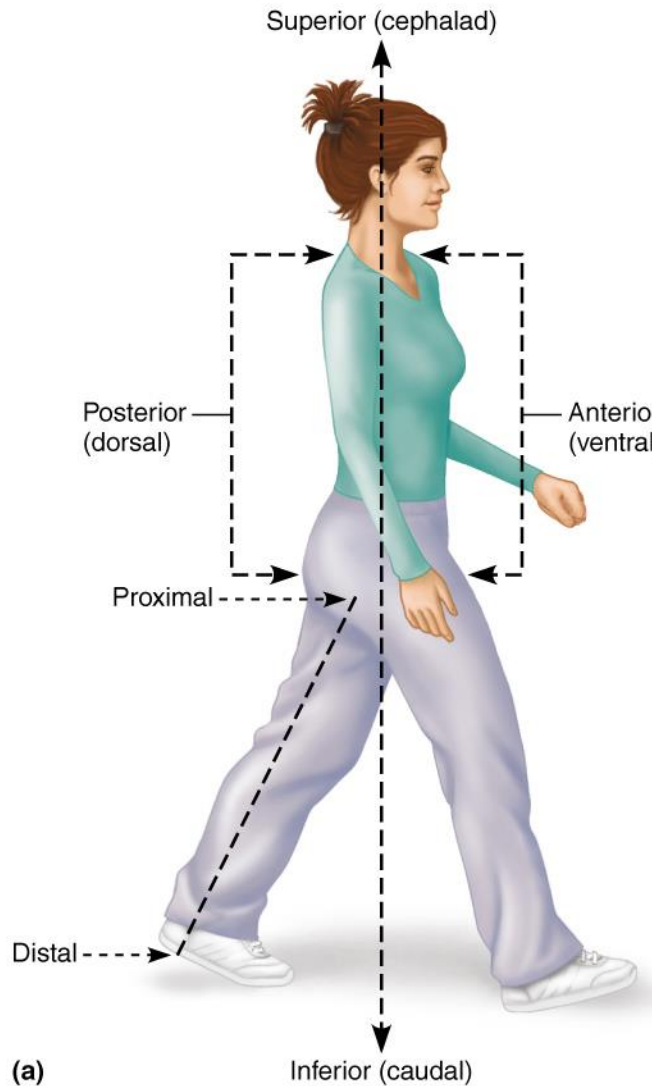


Figure 1.2b Directional terms

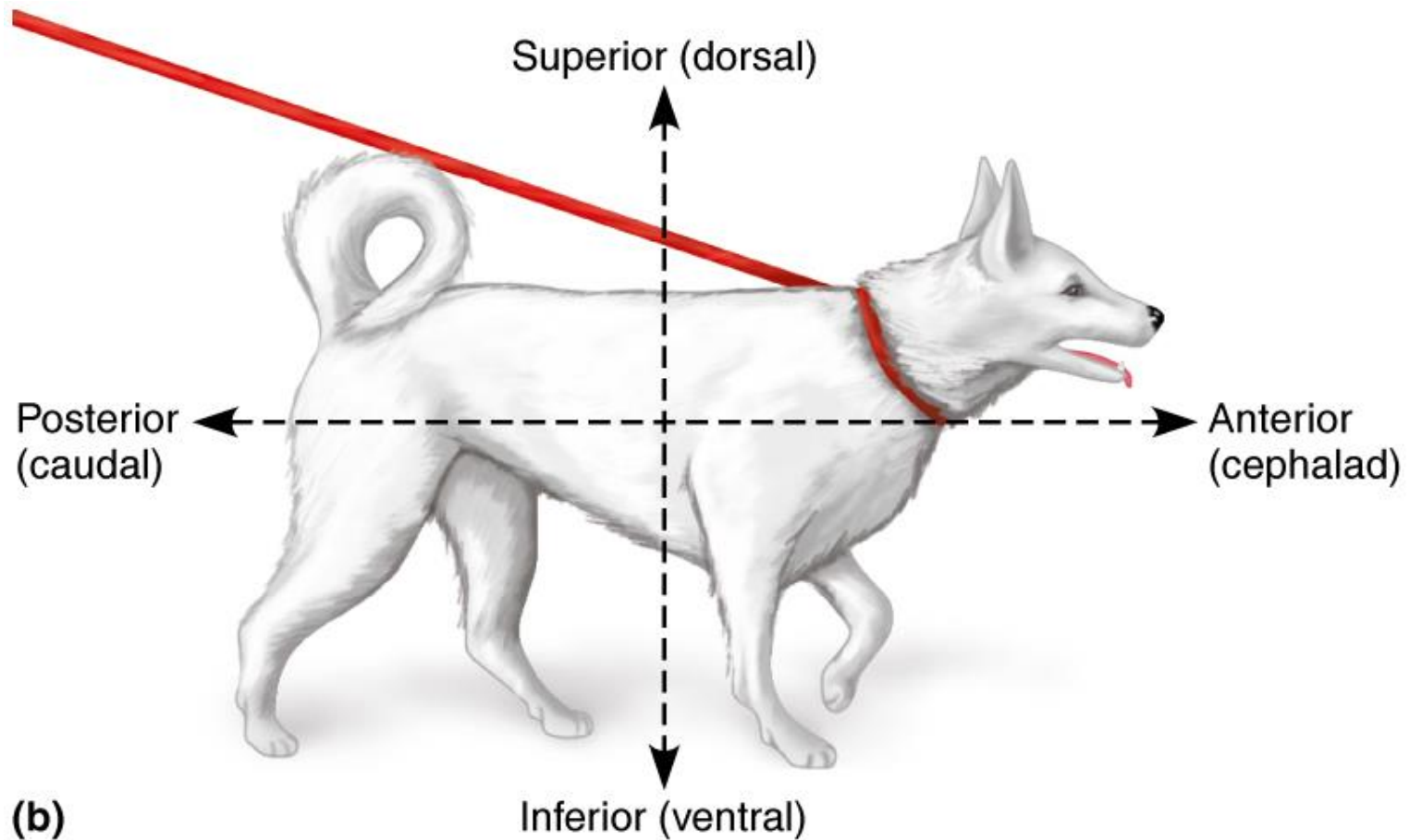


Figure 1.3 Planes of the body with corresponding magnetic resonance imaging (MRI) scans

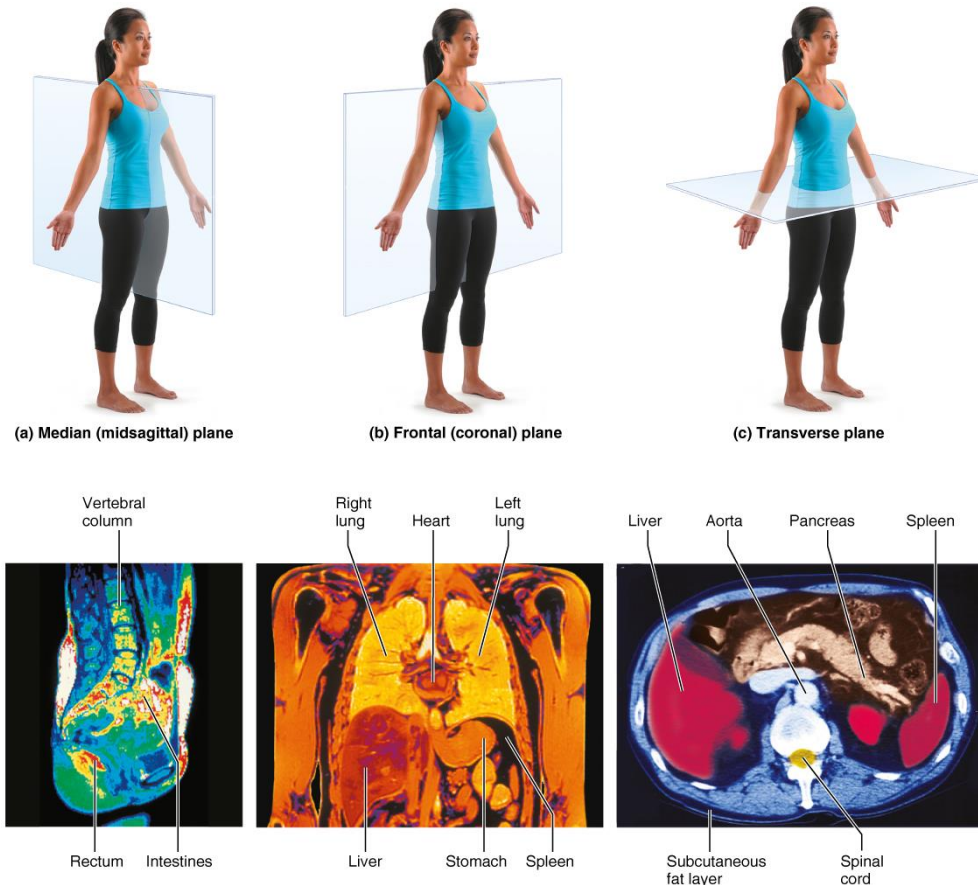


Figure 1.3a Planes of the body with corresponding magnetic resonance imaging (MRI) scans



(a) Median (midsagittal) plane

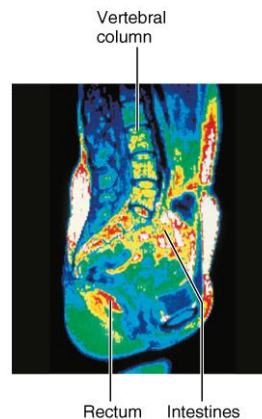


Figure 1.3b Planes of the body with corresponding magnetic resonance imaging (MRI) scans



(b) Frontal (coronal) plane

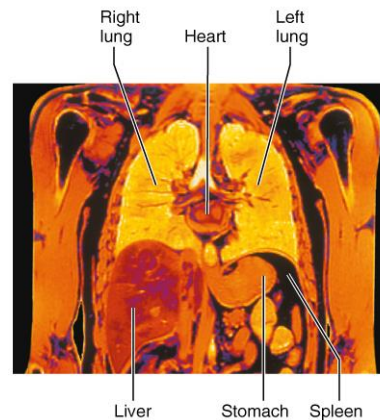


Figure 1.3c Planes of the body with corresponding magnetic resonance imaging (MRI) scans



(c) Transverse plane

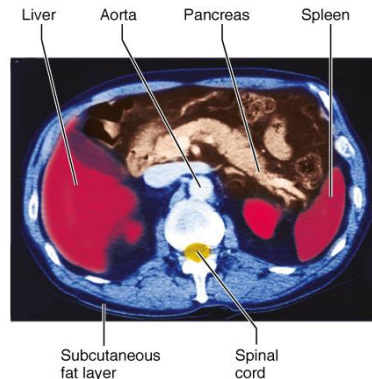


Figure 1.5 Dorsal and ventral body cavities and their subdivisions

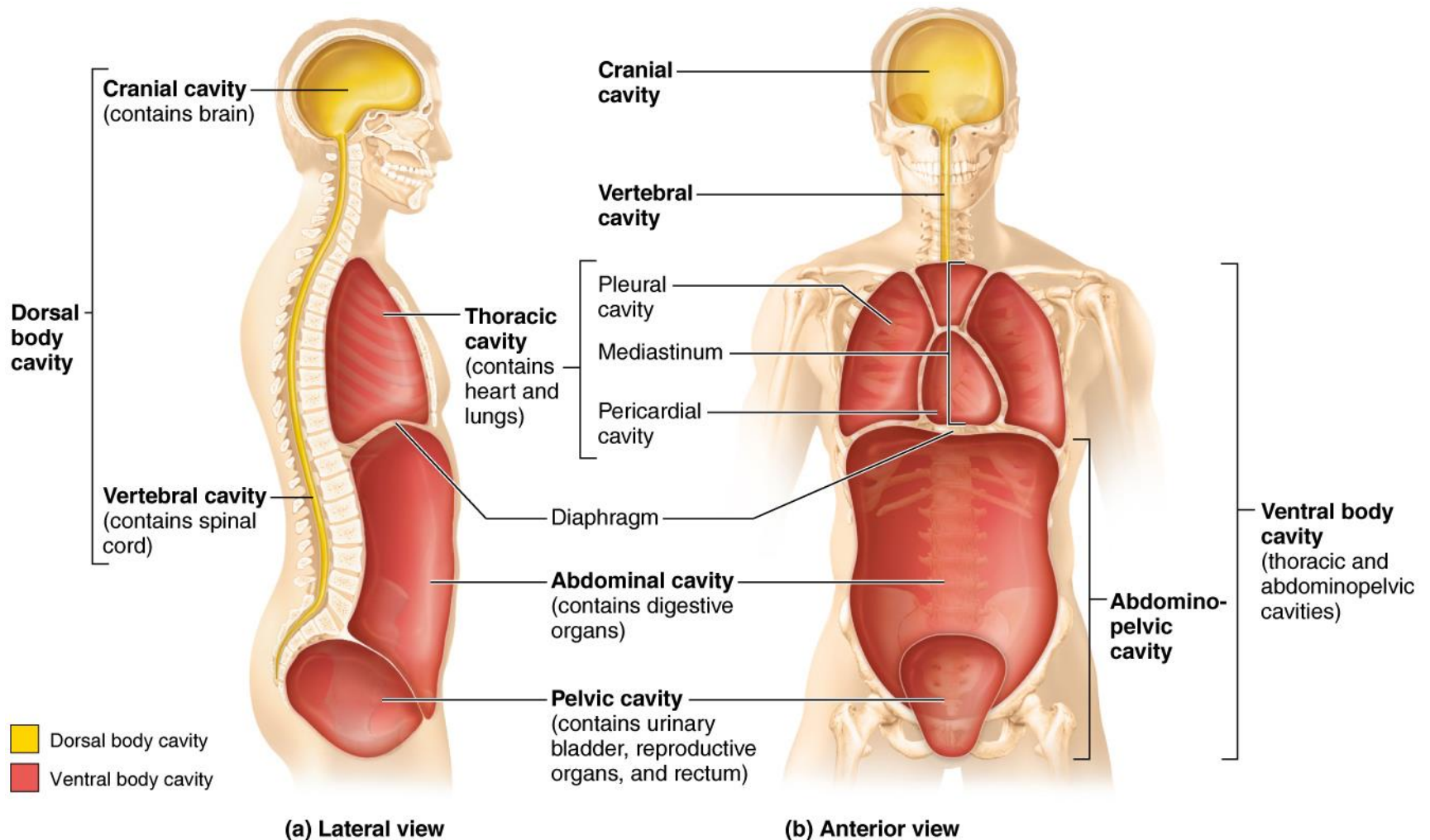
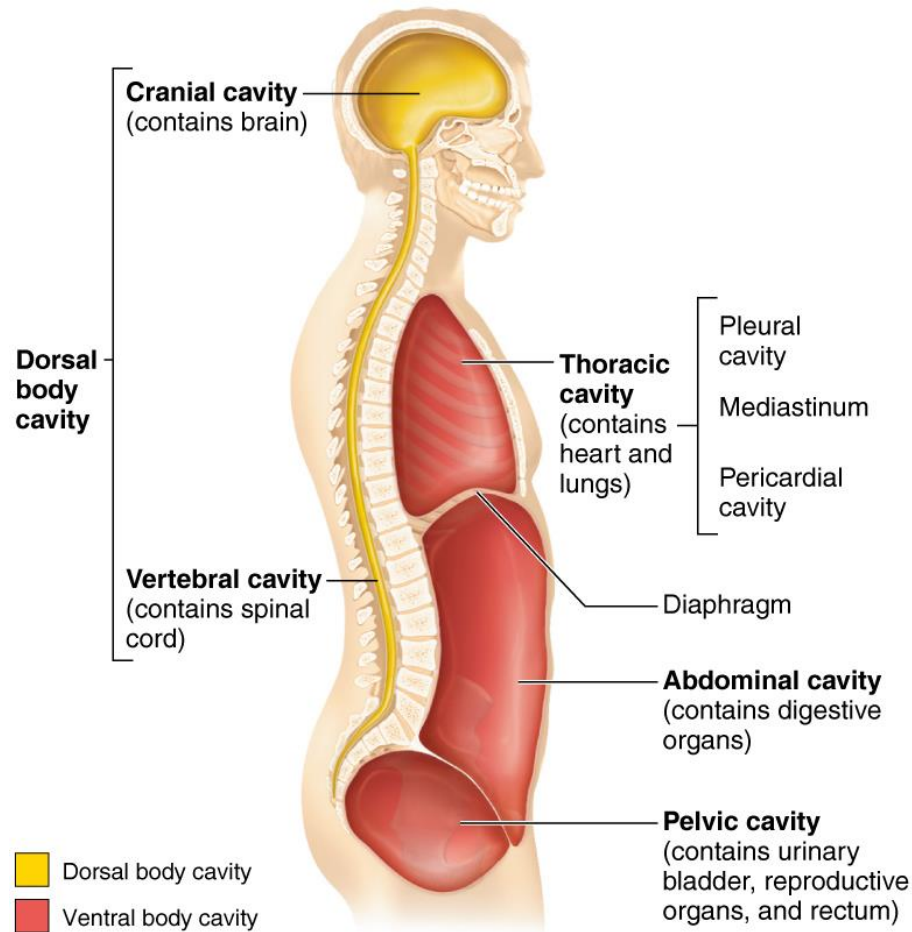
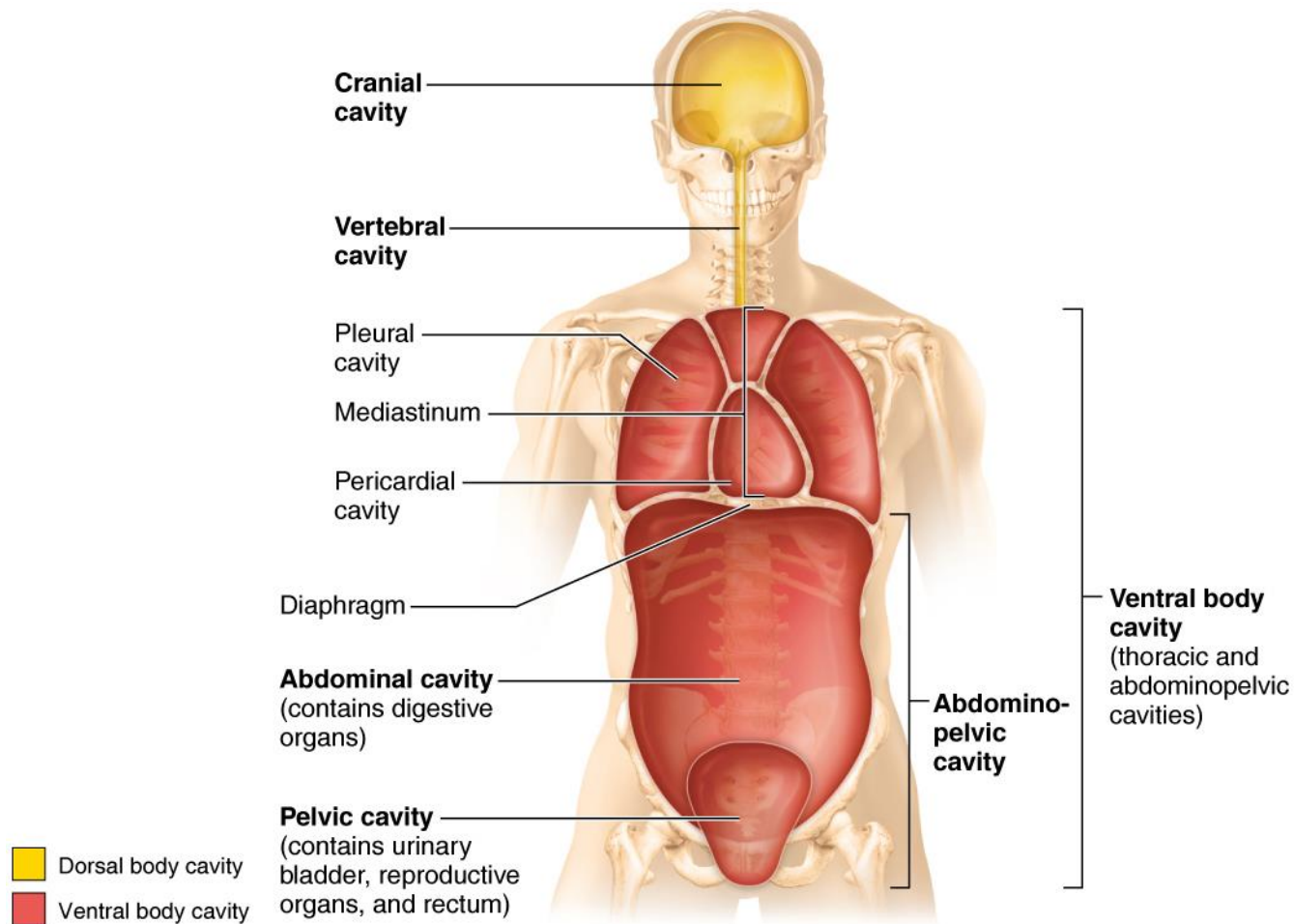


Figure 1.5a Dorsal and ventral body cavities and their subdivisions



(a) Lateral view

Figure 1.5b Dorsal and ventral body cavities and their subdivisions



(b) Anterior view

Figure 1.7 Abdominopelvic quadrants

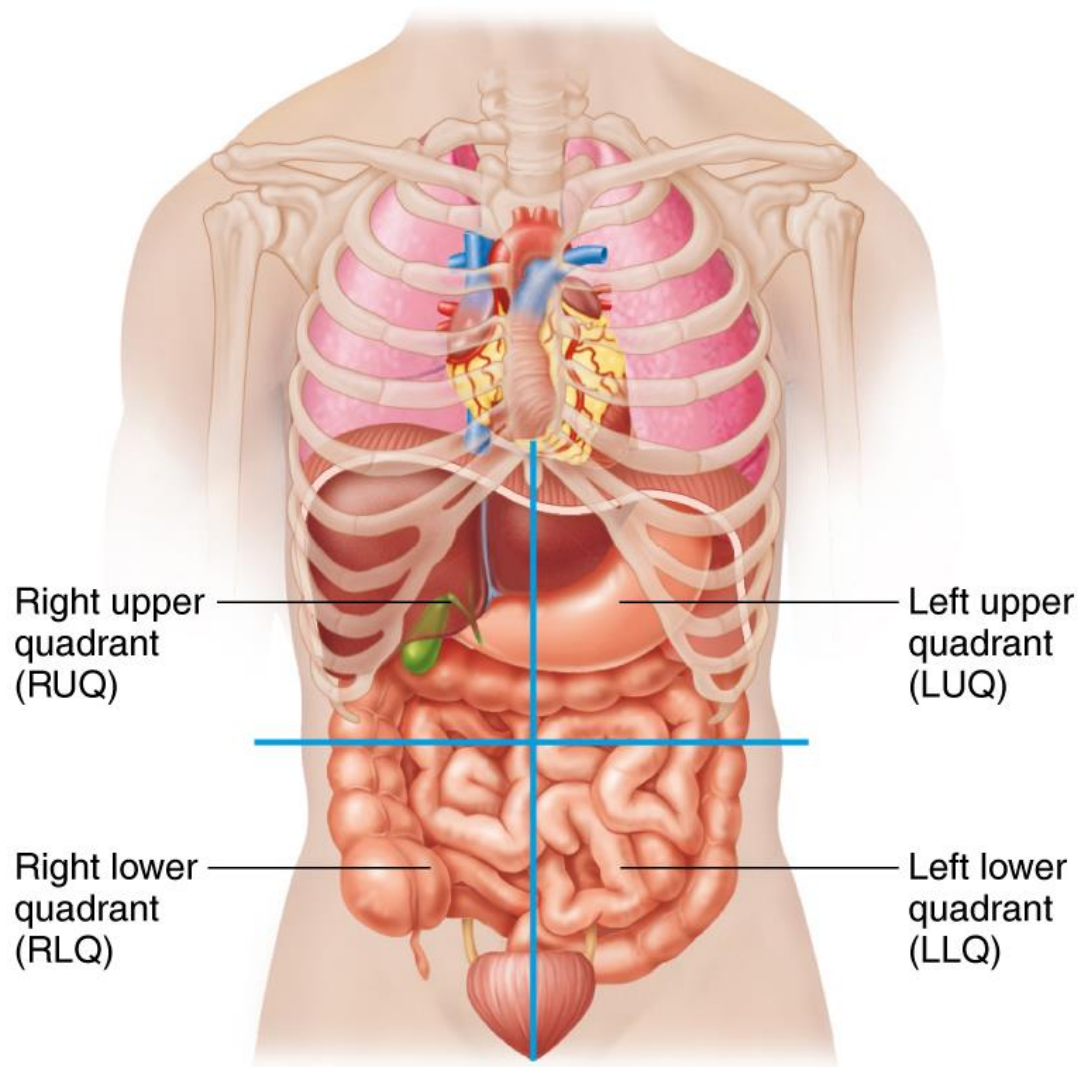
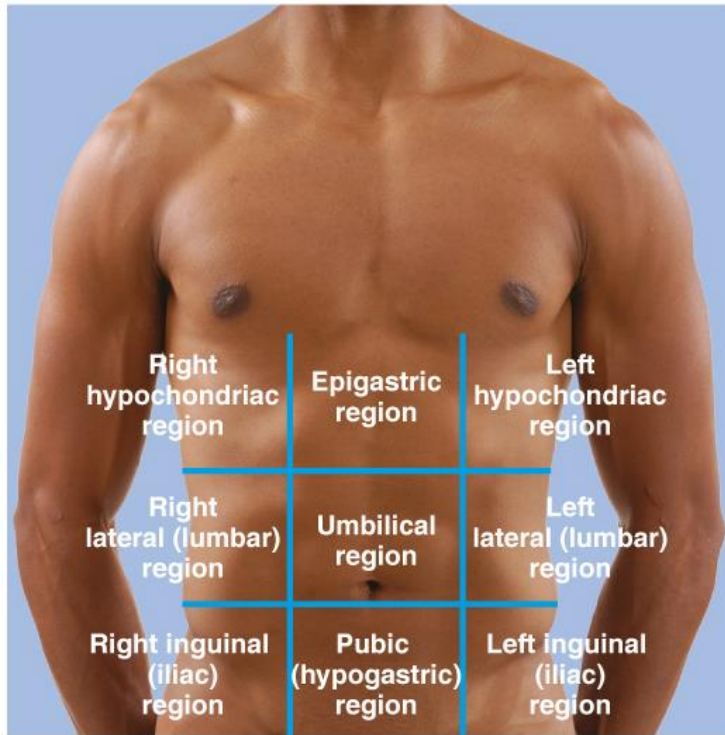
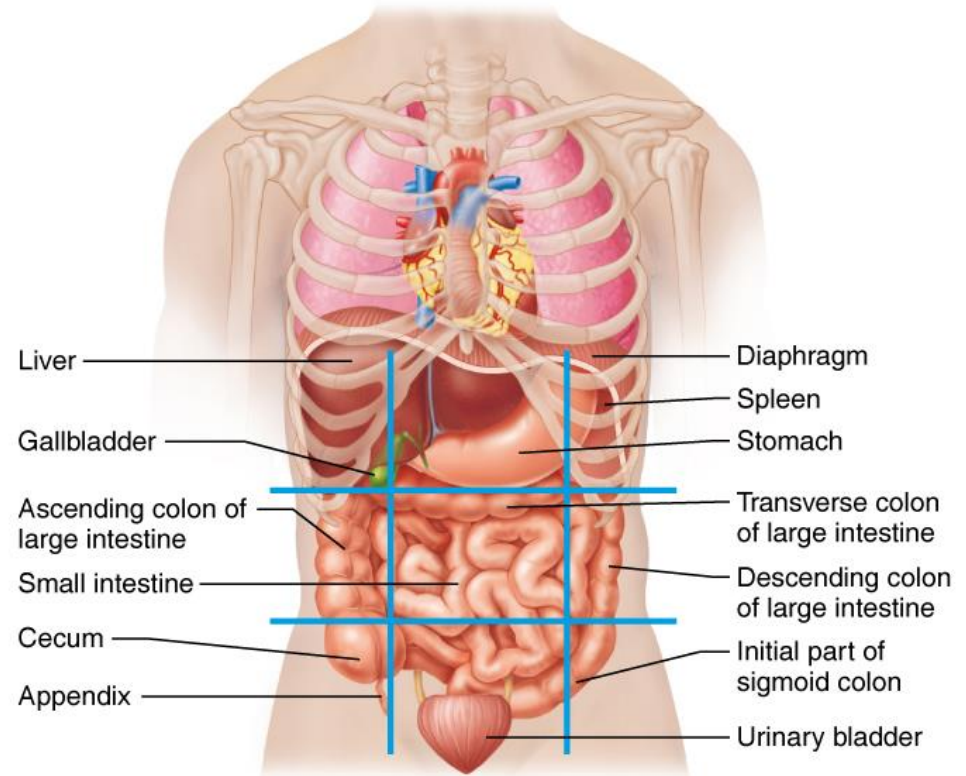


Figure 1.8 Abdominopelvic regions

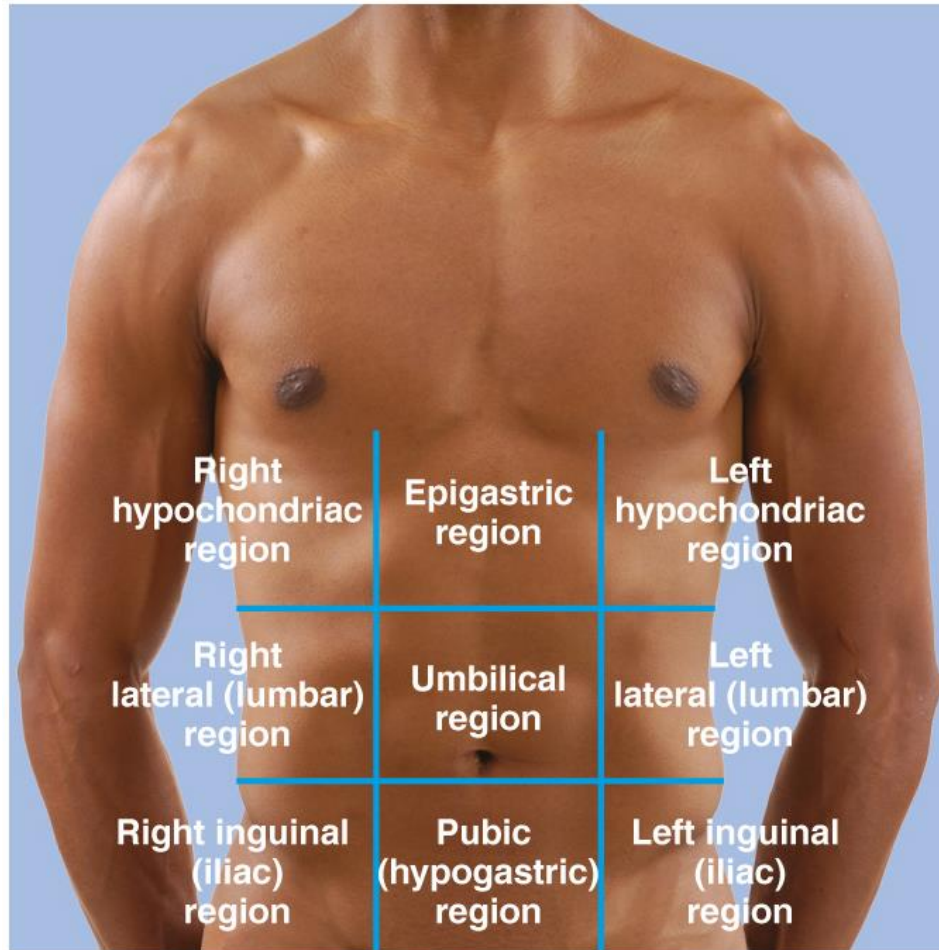


(a)



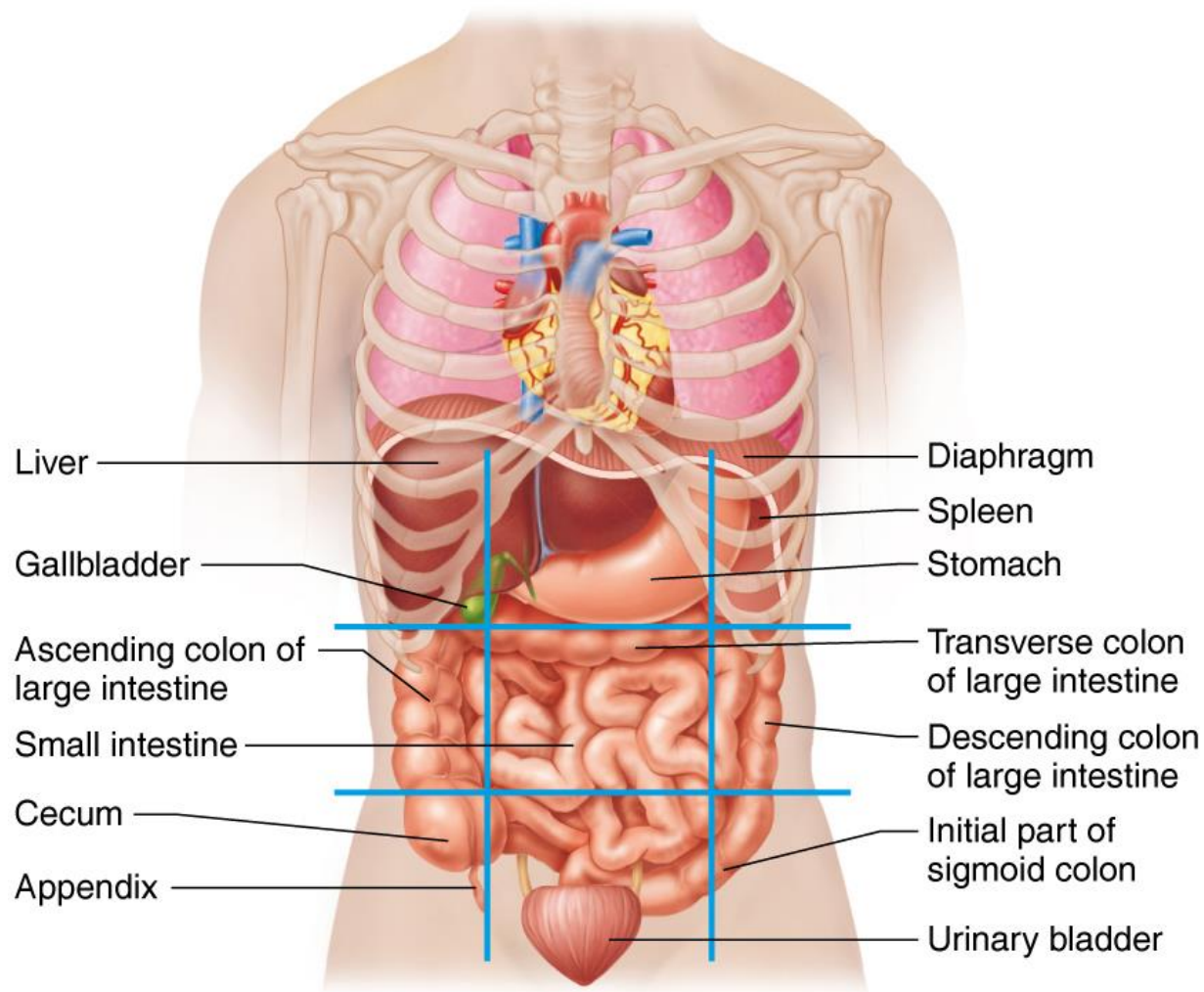
(b)

Figure 1.8a Abdominopelvic regions



(a)

Figure 1.8b Abdominopelvic regions



(b)

Figure 1.9 Other body cavities

